

A large white outline of a lightbulb is centered on the page. Inside the bulb, the text "MRE DISCUSSING MARINE RENEWABLE ENERGIES" is written in white and blue. The bulb has a filament and a base. Six white lines radiate from the bulb, suggesting light or ideas.

MRE
DISCUSSING
MARINE
RENEWABLE
ENERGIES



A guide
to **understand**
and be **heard**



MRE: DON'T WAIT TO BE HEARD!

Since 1990, Surfrider Foundation Europe acts to protect shores, oceans and its users. Our position is driven by our local to global model with a strong focus on territories.

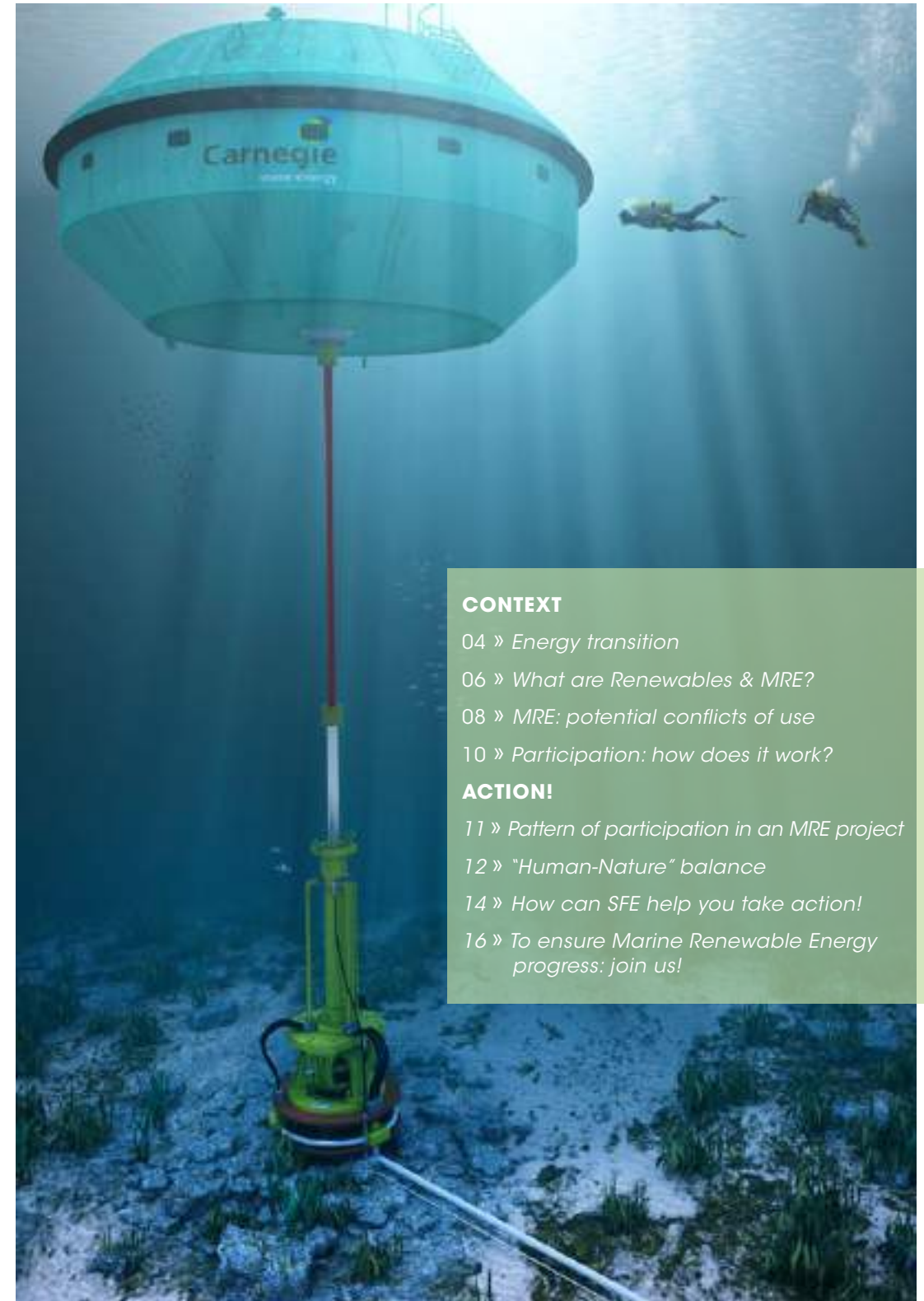
Coastal and maritime areas have always been spaces of innovation and development. Nowadays, more and more projects emerge from climate change, coastal lifestyle attraction or blue growth ambitions.

The energy challenge (production diversification, clean energy) bring us to use the opportunities that marine ecosystems provide: wind, ocean currents, waves and temperature variations. However, these new projects on our shores and maritime spaces are going to generate issues and tensions because of their interactions with society's old habits. That is why it is up to us to defend the stakes and practices that we care about, to defend them with focus. The only way is participation.

Facing actual societal challenges as well as the rapid growth, we must adapt and act. Together. By speaking up, we give ourselves a real chance of combining future practices, an energy transition and building a better world for future generations.

That is our ambition here. From the energy context to improve participation, we offer you a few pages to better understand how to speak up for our coasts. Enjoy!

By speaking UP, we give ourselves a real chance of combining future practices, energy transition and building a better world for future generations.



CONTEXT

04 » *Energy transition*

06 » *What are Renewables & MRE?*

08 » *MRE: potential conflicts of use*

10 » *Participation: how does it work?*

ACTION!

11 » *Pattern of participation in an MRE project*

12 » *"Human-Nature" balance*

14 » *How can SFE help you take action!*

16 » *To ensure Marine Renewable Energy progress: join us!*

ENERGY TRANSITION: MOVE TO A GROWN-UP SOCIETY

If the 20th century has been one of excesses, the 21st century compels us to go back to collective reasoning with climate change and managing the limited resources of our planet. Our societies have grown by drinking up energy, embodying the correlation between energy consumption (particularly fossil fuel energy) and GDP growth during the 20th century. It is now time to move on to a new world, in which practices must be driven by concepts as simple as end of resources or balance between individuals and collectives. In short, moving on to a grown-up society which assumes its responsibilities and its choices!

Energy transition must tackle at least three major issues:

1. **Decarbonise our societies**
2. **Secure energy production/consumption**
3. **Improve energy performance**

A GLOBAL SOCIETAL CHALLENGE

These global issues call for global strategic engagements that are deployed at the local level through territorial policies, projects and infrastructures.

Thus, energy transition requires a changing context of our development and a transition of governance. It is up to us to tackle this global societal challenge based on both changes of energy choices and ways of conducting them. As a matter of fact, democracy as we know it is being challenged and, if energy ambitions are known today, we must implement them collectively to draw the way toward them. This will be achieved by revitalising our democratic practices and particularly through public dialogue.

Energy transition is in fact bound to the necessity of open, dynamic and inclusive participation.



What is the challenge?
Change our energy choices
but also our ways to
conduct them. One word:
PARTICIPATION.



THE VALUE OF RENEWABLE ENERGIES

Renewable energies prevent from drying up finite resources like hydrocarbons while participating in tackling climate change. As a result, the energy density produced is reduced compared with fossil energy production. We thus must multiply the centers of production and optimize productions while developing reduction of consumption strategies and energy control. The goal is to make these complementary renewable energies competitive in order to stimulate their development!

THE 4 OBJECTIVES OF EUROPE (2030)

1. **Increase the share of renewable energies in European consumption to 27% (negotiation are in progress to reach at less 32%).**
2. **Reduce 40% greenhouse gases.**
3. **Achieve 27% of energy savings compared to 1990.**
4. **Increase power grids interconnections to 15%.**

Regarding production, consumption, transport or stocking processes, developing renewable energies present massive challenges for our societies. What is at stake? That this development occurs in the best conditions, that means ensuring consistency with territories, their stories, their dynamics and their users.

MARINE RENEWABLE ENERGIES, BETWEEN DEVELOPMENT AND DIVERSIFICATION

Renewable energies present a real production potential but also a source of employment, of securing volumes and technological development as well as a pool of production and storage facilities.

Marine Renewable Energies (MRE) are part of the Renewable energy family. Currently, MRE installations relate mainly to offshore wind power. First, the goal was to anchor wind turbines to the bottom of the ocean, which naturally limited the possibilities.

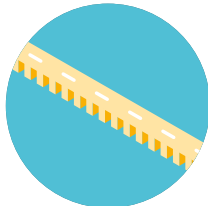
Then, floating wind turbines were developed: they require less facilities and can be installed where the sea is deeper. If wind turbines are the most developed technology, water and wave energies are rising in popularity, as well as thermal recovery and – to a lesser extent – osmotic energy. These farms should become a reality and take up parts of shores and maritime spaces – except from tidal energy, which is too invasive to become a priority.

THE 6 MAIN TYPES OF MRE



Wind power

(offshore wind turbines, fixed or floating)



Tidal power

(hydropower dam or tailing ponds)



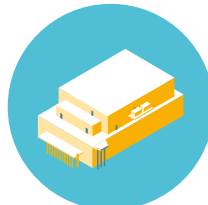
Wave power

(wave energy converters)



Marine current power

(tidal turbines)



Thermal power

(temperature variations between the surface and the colder sea bottom = temperature gradient)



Osmotic power

(difference in the salt concentration between seawater and river water)



Only an open, voluntary and transparent **DIALOGUE** can bring a warranty toward the successful integration of MRE.



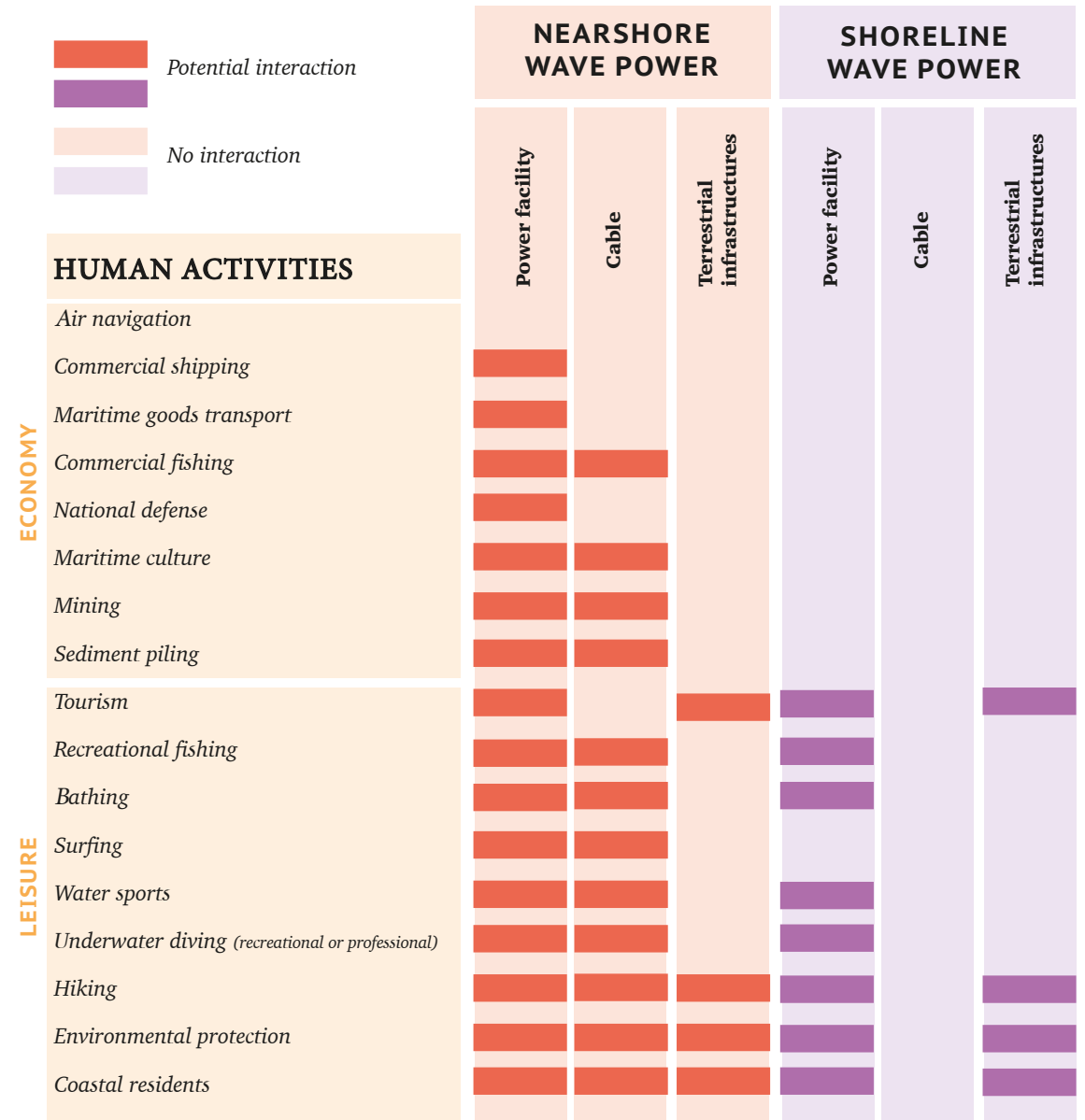
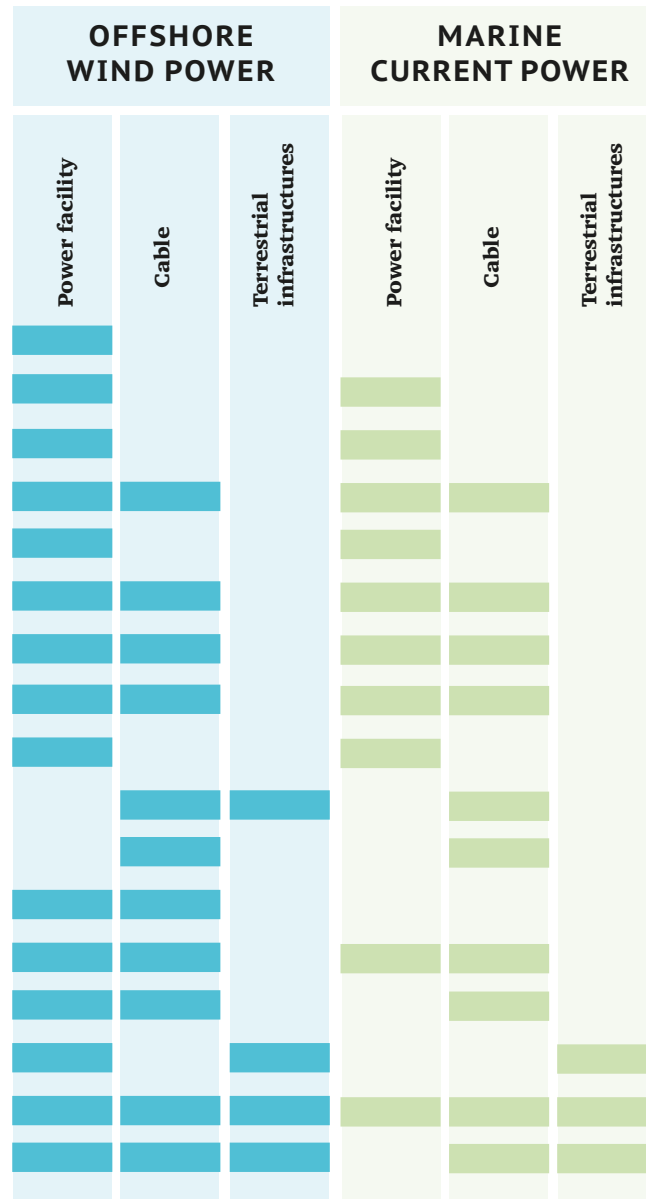
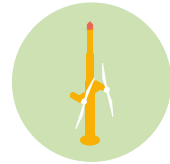
INTEGRATE & PRESERVE

Integrating these new industrial elements in territories and making them cohabitate with pre-existing habits and uses raises questions, even fears. Territories dynamics must go on while integrating MREs. In order to do this, the MRE subject must be known and discussed with all the parties concerned. Only an open, voluntary and transparent dialogue can provide a warranty. It is a question of considering all the territorial challenges in order to carry out MREs facility development by integrating them in an economic, social and environmental network.

MRE: WHAT ARE THE POTENTIAL CONFLICTS?

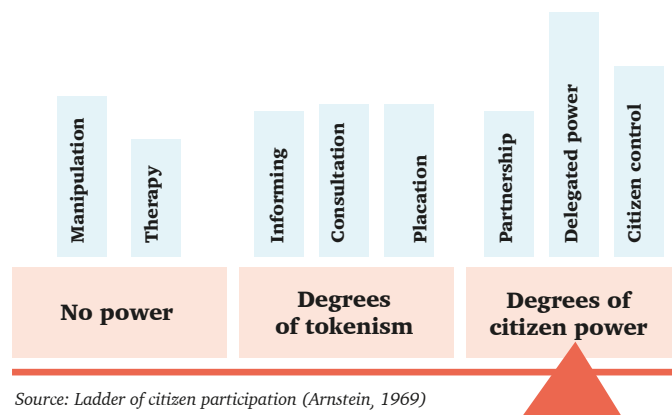
The cohabitation on the same territory of an MRE facility and human activities can cause problems. Potential interactions vary according to the type of MRE and the nature of our customs in the zone. Here is a theoretical presentation of potential conflicts for wind, marine current, nearshore and coastal wave power*.

* We are not presenting interactions with osmotic and thermal powers, because these technologies are far from being mature.



PUBLIC PARTICIPATION: COLLECTIVELY SEEKING ACCEPTABLE SOLUTIONS TO ALL

Public participation is an inclusive agreement seeking process about an issue that concerns everyone, aiming to make a collective decision. This process aims to incorporate everyone's skills around a shared project in a participatory democracy dynamic. By implementing it, project holders aim to facilitate territorial integration by creating interest around it and by stimulating its use by stakeholders, which is the goal of participation. Participants aim to bring their territorial habits and sensitivities in order to contribute to the understanding of the territory and its challenges. The final objective is to collectively aim to prevent the risks of conflicts by activating territorial ownership. In other words: "This, is also "our home". We take part in decisions that will shape our territory, our future!"



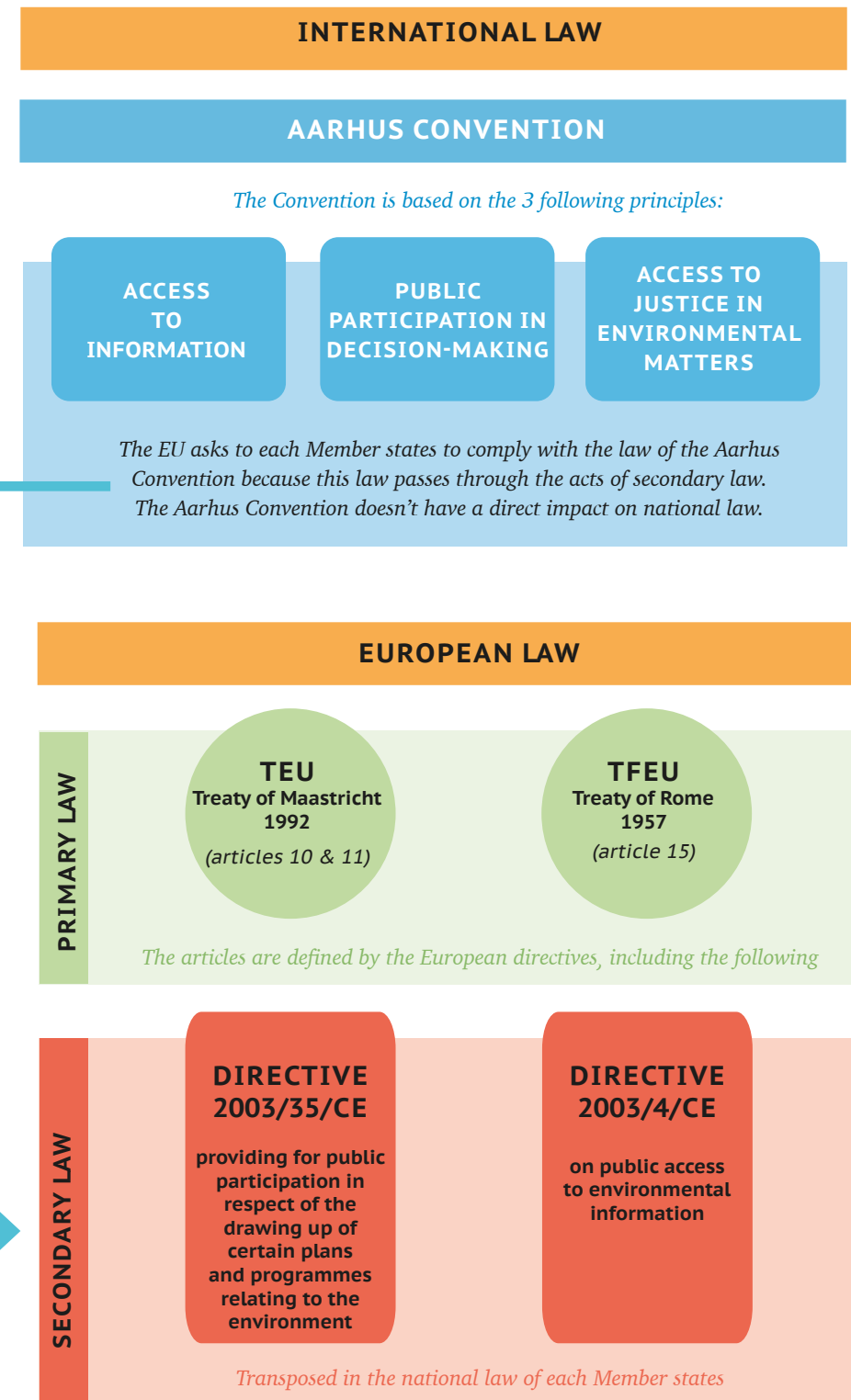
PARTICIPATE FROM THE BEGINNING!

Article 6 of the Aarhus Convention states that "each party shall provide for early public participation, when all options are open and effective public participation can take place".

The question of opportunity in a project must be integrated to the participation process, which has to be widely opened to discussion.

GUARANTEE THE QUALITY OF THE CONSULTATION

As part of the implementation of an RME project, it may be interesting to consult an outside expert who could be a guarantor and facilitator of the consultation. He should be independent of any stakeholders of the project or territory. His role could be defined as : "A guarantor should be a person who is in charge of ensuring that the consultation takes place under sufficient conditions to establish a confidence climate, where disagreements could be expressed and that agreements should be sought. He would therefore ensure the respect of the rules of the consultation, as defined in a charter for instance (when it exists) or in the «state of the art» of the consultation. In particular, he would ensure the climate of listening, transparency, respect for people ..."





6 QUESTIONS TO ASK YOURSELF

Public participation must go beyond public consultation, or even public information. The most important thing is to put together a favourable context for a dialogue that will be guided by several key points which have to be clear and shared by everyone. They answer six questions:

1. **WHY? SUBJECT**
2. **WHAT? OBJECTIVES**
3. **WHEN? STEPS & TIME DEDICATED**
4. **WHO? PARTICIPANTS**
5. **HOW? DOCUMENTS & METHODS**
6. **MEANS? ORGANISATION**

Beyond this, project holders need to aim for an optimal participation regarding stakes representativeness, but also insure the legitimacy of the participants representativeness. Whatever the means, there is no way around these key points, as they guarantee and optimise the collection and confrontation of contributions, which are necessary to their integration in the project development.

GET INVOLVED AND AIM FOR THE « HUMAN-NATURE » BALANCE

Surfrider Foundation Europe is obviously backing up the energy transition to reduce climate change while preserving our planet's resources and orienting our societies towards sustainable ways of development. However, all of this must be done in order to preserve the Human-Nature balance.

EARLY DIALOGUE, PERMANENT DIALOGUE

In that way, environmental challenges and territorial uses must be considered in order not to be threatened by any project. Public participation must offer a setting that allows a substantive dialogue between stakeholders. They must be incapacitated to embrace the problematic without being experts. Time must be allocated for skill improvement and thus to open the dialogue early in the process, even establish it permanently. The representativeness of the challenges must be guaranteed, as well as the representativeness of the participants. The quality of the dialogue is based on the voluntary engagement of each person, the respect of everyone, the transparency of information and the sincerity of the exchanges.

THE 5 PILLARS OF PUBLIC PARTICIPATION AROUND MRE

Opening our territories to marine renewable energy is an opportunity to develop a new way of talking in the interest of territories as well as the energy transition. Thus, Surfrider wishes that public participation regarding MRE would respect the following pillars:

1.

INNOVATE AND FIND NEW WAYS OF DOING

To respond to new and massive challenges, let's find new ways of seeing and doing!

2.

INTEGRATE GOVERNANCE

Integrating governance in coastal territories is a priority to elevate them as high as the climate challenges. Everyone can and must participate.

3.

PROMOTE SKILL IMPROVEMENT FOR ALL STAKEHOLDERS

Climate education participates in making discussion easier.

4.

STIMULATE ENERGY TRANSITION

Talking collectively about the low carbon society model and make it desirable.

5.

DEVELOP AND PROMOTE A SUSTAINABLE TERRITORIAL DIALOGUE

Spread good practices. The way of producing is as important as the final product.

WHAT SURFRIDER CAN HELP YOU ACHIEVE

SURFRIDER COASTAL DEFENDERS

OFFER OUR EXPERIENCE REGARDING CITIZEN PARTICIPATION

- Stimulate citizen participation toward territorial co-construction
- Help you improve your skills regarding MRE
- Inform and mobilise around territorial projects (through Surfrider Coastal Defenders)
- Take advantage of our expertise: consulting, accompanying, tools, communication kits, ...

INFORM YOU ABOUT TERRITORIAL DIALOGUE PROCESSES

- Identify stakeholders: commissioner, manufacturer, guarantor, organiser of the public participation, ...
- Organise a mapping of key actors and their interests
- Offer to commissioners and manufacturers to commit to the public participation manifest
- Send feedbacks to Surfrider Coastal Defenders to maximise participation (pass information, analyse, alert, ...)
- Participate to networks, workshops and thematical exchanges about MRE and involvement

REMIND YOU YOUR SCOPE OF ACTION

Participating is also a matter of humility. Nobody knows everything. It is important to stay within your own scope of skills:

- Respect objectives clearly established with the other participants
- Stay in the scope of the social mission of SFE
- Know when to say: *“I have taken into consideration your remarks and your questions. I will get back to you as soon as possible, after consulting SFE’s experts”*

ENCOURAGE YOU TO PAY ATTENTION...

... to opportunities and evolutions of the context:

- Alliance building
- Possibility to communicate, mobilise = widen your own circle of influence!
- Modify the project
- ...

“
Because we don’t live on the
water – unlike the Bajau,
nomads from the sea (Borneo) –
we tend to listen less to the sea
and those who live near it, on it,
enjoy it, ...”



MANIFEST FOR A TERRITORIAL PLANNING

“There, I’m on board...

This wind farm project off the coast, off my spot, off my promenade along the sea-front?

It’s for a good reason, but still... isn’t it going to ruin everything? What about the local fishermen? The kids on the beach? The landscape? I don’t have much time, or means, but I’m going to manage. And get help. Because I want to know, to understand, to speak up, and get involved in the debate. There is this manifest from Surfrider, that lays the fundamentals of a collective and planned action. Agree on the foundations and then build together. Read it, share it and make other stakeholders of the project commit to it...”.

- **Read SFE’s manifest for a territorial planning / www.surfriderdefenders.org**

MRE

JOIN THE SURFRIDER COASTAL DEFENDERS



**TAKE ACTION FOR SUCCESSFUL MRE,
JOIN THE SURFRIDER COASTAL DEFENDERS!
WWW.SURFRIDERDEFENDERS.ORG
COASTALDEFENDERS@SURFRIDER.EU**

MRE
Discussing Marine
Renewable Energies

Publisher:

Gilles Asenjo

Editor:

Philippe Maison

Project head:

ya'com

Graphic design:

Élise Fougère

Infographics

SFE

Photography:

Carnegie Wave Energy Ltd

Andy Dingley

Dave Forney

(Theforneyflyer.blogspot.com)

John Jodeery

(Flickr.com/johnjodeery)

Printing:

Mendiboure (France),

papier 100 % recyclé Cyclus Print

(certifié FSC)

Surfrider Foundation

Europe (headquarters)

33, allée Moura

64200 Biarritz-France.

+33 (0) 559 235 499

www.surfrider.eu



SURFRIDER
FOUNDATION EUROPE



This study is co-funded by the life Programme of the European Union. The views expressed are those of the authors and do not necessarily reflect the view of the European Commission.

FOR A CLEAN, HEALTHY AND ACCESSIBLE COASTLINE AND MARITIME ENVIRONMENT